

Studio Theatre Technical Specifications

March 2025



Lighting Positions

There is a lighting grid made of 48mm scaff that criss-crosses the stage area. The grid is fixed; access is from a Zarges A Frame.

There are 8x 6-way socapex runs going to the dimmers from IWBs spaced across the rig and on the sides. There are also a few 15amp extension leads if a lantern is not located near an outlet.

Hard power can also be patched to any socket; this comes from a 32amp distro fed from the same power as one of the Betapack dimmers (i.e. these dimmer channels should *especially* not be overloaded or there is a chance of tripping the breaker for all hard power).

Lanterns

Fixture	Quantity	Notes
ETC Source 4 Fresnels, 750w	12	Warm/Cold US and DS washes
ETC Source 4 Junior Zooms (25/50), 575w	11	Usually 3x DS spots and US gobo wash (M size gobos)
ETC Source 4 PARs (Medium Flood), 750w	4	
Philips PL1 LED Fresnels	3	US backlight
LEDJ 200w COB RGBAL PAR	4	2x DS wash, 2x sidelight

Source 4 profiles take M size gobos; we currently have 2 gobo holders. We also have 5 irises to fit the profiles. There is very limited colour stock; if necessary, with sufficient notice SHP can order colour for you. This will be subject to a recharge.

Control

Lighting

- ETC Element (running EOS v2.9),
- 1 universe of DMX running via a splitter to normal LED positions,
- 24x 2kw Betapack 2 dimmers (each channel can be twinned)
- Houselights on separate dimmer (not controllable by lighting desk; alternative audience lights must be rigged if desk control is required)

Sound

- Spirit Folio mixer; 6x mono channels, 4x stereo
- 2x EV speakers
- 1x QSC RMX2450 amplifier
- 2x Denon CD players

SHP does not provide any provision for computer playback; there is a minijack lead plugged into one of the stereo channels on the desk.

Please be aware any electrical equipment (practical lamps, musical keyboards, phone chargers, etc.) brought in by outside companies MUST be PAT tested; SHP does not allow use of any non-tested equipment.

Stage Dimensions & Restrictions

Available floor space: 4.9m by 5.2m (16' by 17')
Height to lighting grid: 4.25m (14')

FOH lighting bar (above first rows of audience) is approx. 6.7m (22') from rear of stage.

There is a fixed RSJ running across the width of the stage at approximately half the stage depth, at a height of 3.2m (10.5'). As such, there is usually additional wash lighting upstage of this.

The stage area is covered with a vinyl dancefloor.

Seating is level with and above the stage (raked bleacher bench seating). The studio theatre seats approximately 50 people.

NB: There is a fire exit on stage (USL) - this is an exit for both performers and the audience. A clear route to this door (at least 750mm wide) must be allowed for in your set design.

South Hill Park reserves the right to remove any part of a set which we consider to be a health and safety hazard.

Backstage

There are two dressing rooms backstage, each fitting approximately 4 performers. Each has an attached toilet (including sink). There is a show relay system fitted, with individual volume controls on each speaker.

NB: The backstage corridor must be kept clear at all times: this serves as a fire escape route for not only the studio theatre but also the rest of the first floor.

Access

Access is through the main Arts Centre building; any set needs to fit through a standard sized door.

The studio is on the first floor, with a small set of steps at the entrance; there is a publicly accessible lift between ground and first floors, and a smaller personal lift (needs to be unlocked by the House Manager, please ask at reception) to allow access for any company or audience members who have difficulty with steps.

The control box is above the audience, in the eaves of the building; it requires using stairs or a ladder to access and the space is somewhat cramped.

If you wish to view the space beforehand or have any questions, please contact:

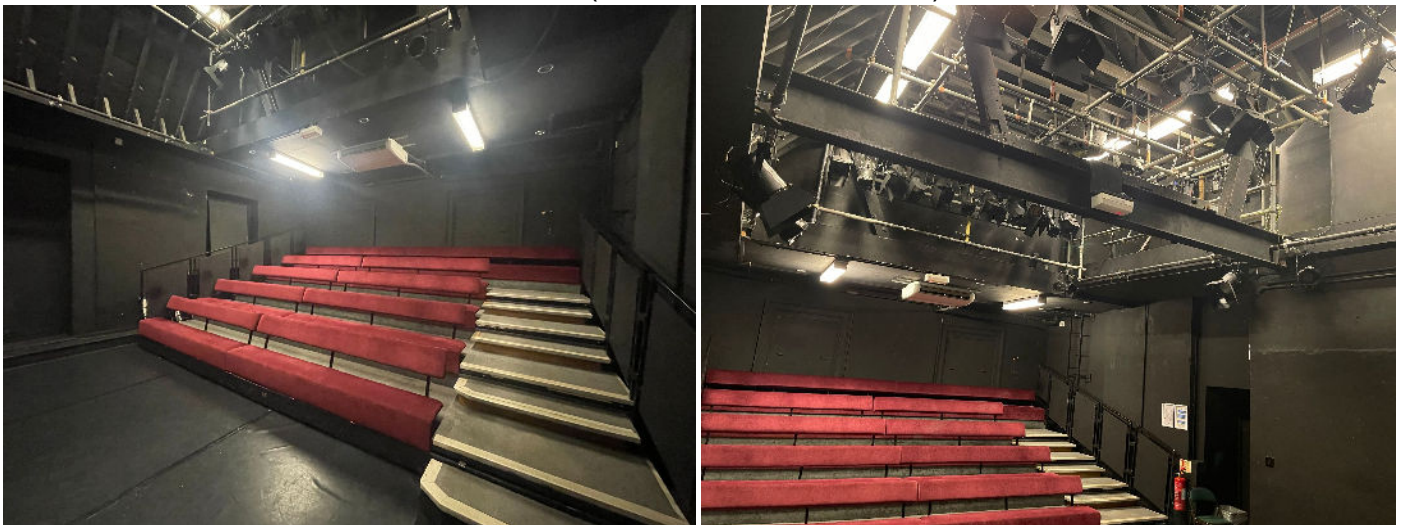
Tony James (Technical Manager), tony.james@southhillpark.org.uk

Technical Department, technical@southhillpark.org.uk

Photos



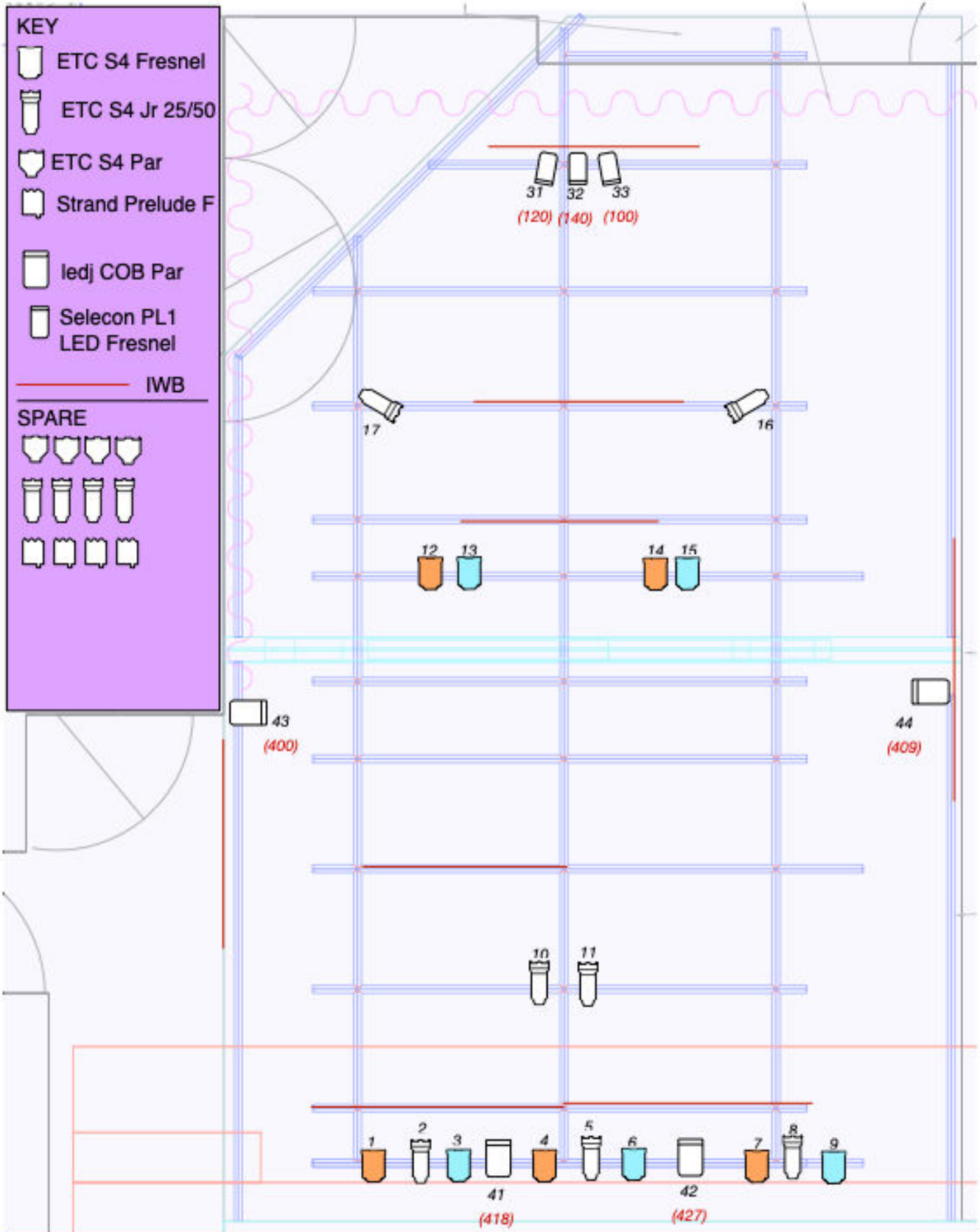
Studio theatre entrance (including wheelchair lift to right).
First Floor: Access via main stairs and lift (near location of camera).



Seating banks. Scaff lighting rig.



Backstage corridor & Dressing Room 2. Control box.



SOUTH HILL PARK STUDIO THEATRE STANDARD RIG
(updated March 2025)

