

# South Hill Park

Berkshire's centre for the arts,  
business and community



January – April 2024  
[southhillpark.org.uk](https://southhillpark.org.uk)

**On sale now**

Registered charity 265656

# Become a member, be a friend

Become a South Hill Park member and be a friend that helps your local arts charity inspire, connect and enrich lives



## Friend

Enjoy priority booking  
Seasonal brochures delivered to your door  
Monthly e-news

**£40**

## Good friend

Also enjoy discounts on up to 12 shows and films  
5% discount on many courses  
VIP drinks reception

**£120\***

## Best friend

Also enjoy VIP show tickets  
Backstage tours  
2 for 1 ticket offers

**£500\***

## Many other benefits included

Only good friends and best friends are eligible for the discounted members price when booking tickets for selected shows, films or courses

For more information and to purchase your membership package  
[southhillpark.org.uk/membership](https://southhillpark.org.uk/membership)

\* Includes voluntary donation · Terms and conditions apply · Subject to availability · Prices per annum



# Welcome



After twelve months celebrating our 50th anniversary, we move into a new year and the start of our next half century. In 2024, we mark another significant moment in the history of the Arts Centre, the 40th birthday of the Wilde Theatre. On 15 May 1984, HRH The Princess Ann officially opened the theatre which has since played host to thousands of productions and welcomed audiences of more than three million. The dedication, enthusiasm and passion of so many to create a new performance space in Bracknell means we are still able to provide our community with a broad range of events and performances.

Our pantomime *Sleeping Beauty* has broken all box office records and I am delighted to announce that our Christmas extravaganza for 2024 will be the legendary tale of *Robin Hood*, sprinkled with panto fairy dust. But first, our Easter musical, the family favourite Disney's *Beauty and the Beast*. The success and reputation of our community productions has grown and grown, so book your tickets soon for this magical adventure.

Our Studio Theatre productions continue with *The Ballad of Maria Marten*. If you have not ventured into the Studio Theatre before I would encourage you to do so, it is a wonderful intimate performance space that offers something very special.

Following the success of our first *Wedding Fair* in 2023, it's back on Sunday 14 January (page 5) and, now in its 24th year, the *Lift Off Dance Festival* returns with two inspiring gala performances in March.

As the cost-of-living crisis continues to bite, we have all been hit with rising costs and South Hill Park is no exception. Our own electricity bill for example is due to rise by £50,000 per year in 2024, an eye-watering amount for a not-for-profit charity. I realise these are tough times for us all, but if you can, please consider donating when you book your tickets, become a Friend, or maybe arrange a fundraising event in aid of the Arts Centre. We are here for you, but **YOU** are South Hill Park.

Thank you for your ongoing support, we look forward to seeing you soon.

**Craig Tittley-Rawson**  
Chief Executive

Front cover image  
**The Elton John Show** 29

### Easy Fundraising

Please consider choosing South Hill Park as your nominated charity when you buy gifts, decorations or food shopping – at no extra cost to you.






# Contents

<b>South Hill Park pantomime</b>	<b>4</b>
<b>Wedding Fair 2024</b>	<b>5</b>
<b>Lift Off Dance Festival</b>	<b>6</b>
<b>A South Hill Park Musical</b>	<b>8</b>
<b>South Hill Park summer events</b>	<b>10</b>
<b>Comedy at South Hill Park</b>	<b>11</b>
<b>You are South Hill Park</b>	<b>12</b>
<b>Conservatoire International Concert Series</b>	<b>13</b>
<b>Bracknell Jazz</b>	<b>14</b>
<b>Wilde Sundays</b>	<b>15</b>
<b>Studio Theatre productions</b>	<b>16</b>
<b>Guest productions</b>	<b>17</b>
<b>Diary</b>	<b>20</b>
<b>Guest productions</b>	<b>22</b>
<b>Summer highlights</b>	<b>29</b>
<b>Courses and workshops highlights</b>	<b>30</b>
<b>Exhibitions</b>	<b>34</b>
<b>Dining at South Hill Park</b>	<b>36</b>
<b>Information</b>	<b>37</b>

### Keep up to date with South Hill Park news

Subscribe to our free mailing list through our website homepage

### Follow us

-  /southhillparkartscentre
-  southhillpark
-  /shpartscentre
-  @southhillpark
-  /south-hill-park-arts-centre

**Beauty and the Beast**  
**8–9**

**Spot's Birthday Party**  
**24**

**Aled Jones – Full Circle**  
**25**

**Susan of Narnia**  
**28**



A SOUTH HILL PARK **PANTOMIME**

JOIN  
THE FUN

South Hill Park's award-winning  
family pantomime returns this Christmas



Writer Joyce Branagh  
Director Adam Stafford

*'A wonderful gift of  
festive entertainment'*

MAIDENHEAD ADVERTISER ON JACK AND THE BEANSTALK 2022



**Until Sun 31 Dec 2023**



# Wedding Fair

**Sun 14 Jan 12noon–3pm**

**Mansion spaces**

**Free entry**

Join us for our free Wedding Fair. Discover a range of local wedding suppliers, showcased throughout the mansion. From cakemakers and photographers, to florists, jewellers, accessories, bridal wear, transport and entertainment.

Our wedding coordinators will also be on hand to take you on a guided tour of the facilities or to discuss your individual requests to ensure a truly magical experience for you both.

South Hill Park is based in a Grade II listed Georgian mansion house surrounded by beautiful parkland. With picturesque Italian gardens, a lake, elegant rooms

and many original features both inside and outside the mansion.

This truly is a gorgeous setting for your special day.

Live music will be performed throughout the afternoon by:

**Emily Spink** (singer)  
Foyer

**Bryan Edery** (pianist)  
Recital Room

**Je'Zell** (acoustic duo)  
Coach House

**To celebrate your wedding at South Hill Park, contact our Events team on 01344 413514 or email [hospitality@southhillpark.org.uk](mailto:hospitality@southhillpark.org.uk)**



## MEETINGS AND CONFERENCES

# Your conference... your way

**Choose South Hill Park for your next company meeting, conference or event and enjoy our unique blend of an historic setting and creative environment.**

- Nine conference rooms for up to 325 delegates
- Newly built exclusive Coach House suite
- Eighteenth-century Italian garden and award-winning grounds
- Fully licensed on-site catering with a range of options
- Full technical and creative production teams on site to support your event
- A range of post-event evening entertainment options including comedy nights

**Room hire, free parking, complimentary wi-fi, flipcharts, delegate stationary, fresh buffet lunch, speciality teas, Arabica Italian blend coffee and biscuits**

### Teambuilding packages

Run by our professional tutors for 10–25 delegates

#### **Get creative**

Visual arts activity

#### **Get on stage**

Vocal or drama activities in the theatre

#### **Get moving**

Yoga session

#### **Get searching**

Outside treasure hunt and fitness

RECITAL ROOM



ITALIAN GARDEN



To enquire about one of our spaces for your next event  
**[southhillpark.org.uk/hire-us/corporate-hire](http://southhillpark.org.uk/hire-us/corporate-hire)**  
Tel **01344 416233** email **[hospitality@southhillpark.org.uk](mailto:hospitality@southhillpark.org.uk)**



## **Lift Off Dance Festival 2024**

**South Hill Park's annual dance festival is back to celebrate its 24th anniversary with a whole new season of opportunities to watch, participate and engage in the world of dance.**

What started as a local council-led festival to showcase Bracknell dance groups and schools has grown over the past two decades to encompass a wide range of styles, ages and abilities – and reaches far beyond Berkshire.

Dance professionals, students of dance and audience members come together for this extravaganza of cutting edge performances, workshop masterclasses, youth and community group showcases, and dance on screen cinema events of live performances from The Royal Ballet.

The gala days include performances and masterclasses led by professional dancers and choreographers – so the participants and audience members get to see, and be inspired by, where years of dedicated dance training can lead.

Whether you are a seasoned performer or theatre goer, or new to the world of dance, the festival has something to interest all tastes.

**To book tickets and for further information on this year's festival events, dance films and masterclasses, please visit [southhillpark.org.uk/lift-off](https://southhillpark.org.uk/lift-off)**

**Join  /liftoffdance for regular updates**

**Sat 2 March 7pm**

**Wilde Theatre**

**£15, good and best friends £13**

**C**



### **Musical Theatre Gala**

Join us for our new edition to the *Lift Off Festival* programme – a wonderful evening of song and dance, celebrating the best-loved numbers from the world of musical theatre, performed by a wealth of local talent.

Expect well-known tunes alongside a few surprises, including rousing group performances and emotive solos by local groups and industry professionals.

An uplifting, feel-good night of entertainment for the whole family. See the website for a full listing of performers.

**Sat 16 – Sun 17 March 7pm**

**Wilde Theatre**

**£15, good and best friends £13**

**C**



### **Youth and Community Galas**

Groups from Berkshire, Surrey, Hampshire, London, and surrounding areas, apply to take part in these hugely popular galas – showcasing the passion that dancers aged 6yrs, to those in their 80s, have for different styles of dance.

Youth groups, community groups, schools and special guest professional dancers come together to present an evening of dance entertainment for families and dance enthusiasts alike. See the website for full listings of groups taking part in each gala.

All proceeds in support of South Hill Park's fundraising campaign



## Cinema - Dance on Screen

A season of live ballet screenings by The Royal Ballet in collaboration with The Royal Opera House

**Tue 9 April 7.15pm** LIVE

**195 mins incl 2 intervals**

**£20, good and best friends £18**

**C**



ROYAL OPERA HOUSE LIVE · THE ROYAL BALLET

### MacMillan Triple

Celebrating Principal Choreographer Kenneth MacMillan's one-act ballets, starting with his first major work, *Dances Concertantes*. Followed by the haunting descent into madness, *Different Drummer*. And finally *Requiem*, in memory of John Cranko.

**Wed 22 May 7.15pm** LIVE

**195 mins incl 2 intervals**

**£20, good and best friends £18**

**C**



ROYAL OPERA HOUSE LIVE · THE ROYAL BALLET

### The Winter's Tale

Celebrating its tenth anniversary, Christopher Wheeldon's *The Winter's Tale* is an award-winning modern ballet classic adapted from Shakespeare's profound story of love and loss.

**Wed 24 April 7.15pm** LIVE

**200 mins incl 2 intervals**

**£20, good and best friends £18**

**C**



ROYAL OPERA HOUSE LIVE · THE ROYAL BALLET

### Swan Lake

Tchaikovsky's sensational score combines with the evocative imagination of choreographer Liam Scarlett and designer John Macfarlane to heighten the dramatic pathos of Marius Petipa and Lev Ivanov's quintessential ballet classic.

**Thu 30 May 7.20pm** RECORDED

**90 mins**

**£19, good and best friends £17**

**C**



ROYAL OPERA HOUSE LIVE ·  
SADLER'S WELLS AND UNIVERSAL MUSIC UK

### Message in a Bottle

*Message in a Bottle*, the acclaimed dance theatre production by Sadler's Wells Associate Artist Kate Prince, set to the music of Grammy Award-winning artist Sting, centres on the international refugee crisis and an imagined story about one displaced family.

**Sat 2 March**

**Dance Studio**

**£6**

### Musical Theatre Masterclasses

A day of masterclasses taught by industry professionals to help hone your audition and performance skills.

**Sat 16 – Sun 17 March**

**Dance Studio**

**£6**

### Dance Masterclasses

A series of dance masterclasses, taught by industry professionals, across a wide range of styles.

Visit [southhillpark.org.uk/lift-off](https://southhillpark.org.uk/lift-off) from February for a full schedule

Tue 9 – Sun 14 Apr 2024

12noon & 4pm,  
except Thu 11 Apr 7pm

**Relaxed performance**

**Thu 11 Apr 3pm**


**Wilde Theatre**

Suitable for all ages

Running time approx 2hrs

£16

**Total ticket price is £21  
and includes: £16 ticket  
+ £1 booking fee  
+ £4 theatre support levy**

Best friends can get a  ticket  
offer on any performance

Director

**Mark Hooper**

Musical Director

**Tim Cumper**

Choreographers

**Holly Hermon**

**Luke Robinson**

All proceeds in support  
of South Hill Park's  
fundraising campaign

## Beauty and the Beast – The Broadway Musical

Bonjour! We proudly invite you to 'Be Our Guest' as the most enchanting musical of all time, Disney's *Beauty and the Beast*, comes to South Hill Park this Easter.

Step into the timeless world of this Broadway classic, brought to life on stage with all the charm and elegance audiences know and love.

The story tells of Belle, a young woman in a provincial town, and the Beast, who is really a young prince trapped under the spell of an enchantress. If the Beast can learn to love and be loved, the curse will end and he will be transformed into his former self. But time is running out. If the Beast does not learn his lesson soon, he and his household will be doomed for all eternity.

Based on the Academy Award-winning animated feature, the stage version includes all of the spellbinding music written by Alan Menken, Howard Ashman and Tim Rice including: *Belle*, *Gaston*, *Human Again* and *Be Our Guest*.

This 'tale as old as time' is filled with a spectacular cast of local talent and an award-winning creative team, making it a must-see family show this Easter holiday.

*Don't believe me? Ask the dishes!*

Previous South Hill Park Easter productions



*Shrek The Musical 2022*



*Kinky Boots 2023*



40 YEARS  
OF THE WILDE  
THEATRE



Disney  
**BEAUTY  
AND THE  
BEAST**

**THE BROADWAY MUSICAL**

© Disney

**MUSIC BY ALAN MENKEN**

**LYRICS BY HOWARD ASHMAN & TIM RICE**

**BOOK BY LINDA WOOLVERTON**

**ORIGINALLY DIRECTED BY  
ROBERT JESS ROTH**

**ORIGINALLY PRODUCED BY  
DISNEY THEATRICAL PRODUCTIONS**

**A TALE AS OLD AS TIME**

This amateur production is presented by arrangement with Music Theatre International.  
All authorised performance materials are also supplied by MTI. [www.mtishows.co.uk](http://www.mtishows.co.uk)



**FREE  
ENTRY**

## SUMMER CRAFT MARKET

**Sun 26 – Mon 27 May  
10am–5pm**

### **Mansion spaces**

Enjoy some of the UK's best handcrafted arts and crafts, including: stunning jewellery, glass decorations for the garden and home, porcelain ceramic sculptures, greeting cards, silk scarves, leather bags and purses, needle felt animals, engraved glass, wooden jewellery boxes and furniture, and unique gifts made from reclaimed and recycled materials.

This is an indoor market with around thirty artists, from all over the country, displaying their beautiful designs.

**[southhillpark.org.uk/  
whats-on/festivals](http://southhillpark.org.uk/whats-on/festivals)**

## The Festival of Food and music

**Sat 8 – Sun 9 June 12noon–6pm**

**Food, tribute acts and live music**

craft stalls · food market · outside bar  
children's activities · face-painting

**[southhillpark.org.uk/whats-on/festivals](http://southhillpark.org.uk/whats-on/festivals)**

**Celebrating 75 years of Bracknell new town**

**FREE**  
BUT OUR VENDORS WILL  
CHARGE FOR THEIR  
PRODUCTS AND SERVICES

**PLEASE PURCHASE  
YOUR FOOD AND  
DRINK FROM THE  
FESTIVAL VENDORS**

Limited parking available · Please look after the park and take your rubbish home

## The Comedy Cellar

Every Friday  
Fri 12 Jan – Fri 28 June  
Doors 8pm, starts 8.30pm  
Cellar Bar

£18.50  
good and best friends £16.50

 @thecomedycellar

 /thecomedycellar



**Bringing you the best live comedy for over 35 years.**

*The Comedy Cellar* is the longest-running Comedy Club in the UK (outside of London). Established in October 1986, it is one of the most cherished gigs on the circuit, beloved by audiences and acts alike. Under the direction of Simon Houlihan of The Comedy Company Ltd, this highly-acclaimed club has played host to most of

the big names in comedy and continues to bring the best new and established acts every Friday. Previous stars to have graced the stage include: Al Murray, Omid Djalili, Eddie Izzard, Greg Davies, Sarah Millican, Andy Parsons, Micky Flanagan, Katherine Ryan, Jack Whitehall and Russell Howard. Early booking is recommended. Groups may not always be able to sit together. Seating is unreserved.

## Wilde Theatre Comedy



**Chris McCausland** 17  
Sun 28 Jan



**Alfie Moore**  
Sun 18 Feb



**Josh Pugh** 19  
Tue 27 Feb



**Tom Houghton** 22  
Thu 25 April

**TICKETS  
ON SALE NOW**

A SOUTH HILL PARK **PANTOMIME**

# ROBIN HOOD

AND THE MAGIC ARROW

Writer Joyce Branagh · Director Adam Stafford

**Fri 29 Nov 2024 - Sun 5 Jan 2025**

Times and prices vary, please call the Box Office on  
01344 484123 or visit [southhillpark.org.uk](http://southhillpark.org.uk) for information

School and group rates available



TO BOOK VISIT **SOUTHILLPARK.ORG.UK** 11



# YOU ARE SOUTH HILL PARK

Every time **YOU** sit in the audience, audition for a play or steward a show, step into an arts studio or slip on some dance shoes, appreciate a piece of art, enjoy a drink on the terrace, or say 'I do' to the one you love, **YOU** become a vital part of this arts centre.

We're lucky to be based in a beautiful building and grounds, but without **YOU** it would lose all of its life, joy and creativity.

We depend on **YOU** to keep our varied programme of shows, films, courses, exhibitions and outreach projects going.

## **Everyone can be part of the charity**

- Buy tickets for a show or film
- Sign up to one of our courses or workshops
- Take out a membership
- Donate if you can
- Book an educational workshop for your school
- Hire a room
- Volunteer as a steward
- Buy a gift voucher for someone special
- Leave a legacy



**THANK YOU** for getting involved and growing our community  
Visit [southhillpark.org.uk/support-us](https://southhillpark.org.uk/support-us) for more details



**131**  
arts-based  
workshops  
delivered  
to local  
schools



**95%**  
increase in  
wellbeing  
reported



**874**  
people took  
part in our  
programme  
for free



**5**  
art taster  
workshops  
with Age  
Concern



# Conservatoire International Concert Series

Recital Room 7.30pm

£16.50,

friends and best friends £14.50



**DUO** **Hugh Mackay** · cello **Junyan Chen** · piano

**Fri 26 Jan**

A thrilling evening of music for cello and piano by two of the Royal Academy of Music's most distinguished graduates. Their programme includes sonatas by Debussy, Fazil Say and Rachmaninov.



**PIANO DUO** **Giulia Semerano and Filippo di Bari**

**Fri 23 Feb**

We welcome the return of this exciting piano duo from Italy. Both award-winning musicians are now connected with Trinity Laban College in London and are regular soloists on the UK and European scene. Their programme includes music by Brahms and Schumann, and Schubert's masterpiece, the *F minor Fantasy*.



**Instrumental and chamber music by  
The Purcell School**

**Fri 22 March**

The annual visit of musicians from The Purcell School is an eagerly anticipated event. The students who perform for us are selected by special audition and always offer us a wonderful evening's music. We are certain this year's visit will be no exception.



**Musicians from Wellington College**

**Wed 24 April**

This is the first visit to our concerts by the talented musicians from Wellington College. We are promised an exciting evening of chamber music, with a programme comprising of solo items from the college's brightest and best.

# Bracknell Jazz

Recital Room 7.30pm

£17



## Geoff Mason and the Jazz Lions

**Fri 5 Jan**

Former Coldstream Guards trombonist Geoff Mason has established himself as one of the UK's finest exponents of Blue Note era jazz. He plays with the Ronnie Scott Big Band and has worked with many top jazz stars such as Scott Hamilton, Henry Lowther and Nigel Price. He is joined for an evening of swinging tunes by tenor saxophonist Jonny Ford and the Jazz Lions trio.

***An artist ... encapsulating the best attributes of a true musician and improviser*** MARK NIGHTINGALE



## Steve Waterman · trumpet

**Fri 2 Feb**

Steve Waterman is one of the top British jazz trumpet players both at home and on the international scene. He has worked regularly with John Surman, Andy Sheppard, Tony Coe, Carla Bley, Don Weller and many others. Steve is joined by up-and-coming tenor saxophonist Jonny Ford and the Bracknell Jazz house band.



## Lucky Teeth – Geoff Simkins & Liam Noble

**Fri 1 March**

Two masters of jazz improvisation, the legendary alto saxophonist Geoff Simkins and the highly original pianist Liam Noble, play a mixture of standards, originals and traditional tunes. Their recently released, and critically acclaimed, album *Lucky Teeth* takes its name from the feat of a music hall artist who, in 1896, successfully impaled a turnip, dropped 270 feet from Clifton Bridge, onto a fork held between his teeth. Simkins and Noble will execute equally astonishing musical feats, improvising on turnarounds and rootless voicings, rather than impaling turnips.



## Nat Steele Quartet with Mike LeDonne

**Fri 29 March**

New York pianist Mike LeDonne has played with a wide spectrum of jazz masters, from Benny Goodman to Milt Jackson and Sonny Rollins. Oscar Peterson described him as 'one of the most talented pianists of this particular era'. Vibraphonist Nat Steele studied with LeDonne and is featuring him in this short UK tour with his quartet – including in the main show at Ronnie Scott's in celebration of Milt Jackson's centenary year. Hearing these world-class musicians in the intimate surroundings of the Recital Room is an unmissable opportunity.

# Wilde Sundays

**McAllister's 2pm**  
**£9**

Enjoy a relaxed afternoon of live acoustic music, featuring some of the best acts around, across all genres, in a beautiful setting.



## Lee Switzer Wolf + Andy Lavery + Bryony Heart

**Sun 21 Jan**

Singer-songwriter and musician Lee Switzer Wolf describes himself as 'folktronica or headphone music for sad land mammals'. Andy Lavery is a Scottish folk songwriter who recently released his latest album *Twilight*. Bryony Heart is an independent singer-songwriter based on the Hampshire-Surrey border. Her music has evolved into an organic blend of powerful pop with subtle tones of acoustic guitar to reveal a human touch.



## The Gillies + Phil Cooper + Marc Woosnam

**Sun 11 Feb**

The Gillies is a folk and Americana songwriting duo from South East London. Their music tells of love and loss, bittersweet and harsh realities. Phil Cooper is a songwriter and multi-instrumentalist. As a performer, Phil is best known as one third of folk and Americana trio The Lost Trades but also performs solo. Marc Woosnam has played in bands on various stages and has recently started performing as a solo artist in his own right, releasing his debut album last year.



## Mike Lemin + Becky Brown + Veronica Drozdowski

**Sun 24 March**

Mike Lemin sings and plays the piano with a comedic and confessional style. Becky Brown is a singer-songwriter based in the South East. Her songwriting is influenced by pop singer-songwriters such as Taylor Swift, Lauren Aquilina and Nina Nesbitt. Veronica Drozdowski enters the music scene with her slow, pop-influenced originals and twisted covers adapted to her own individual style.



## Martin Wood + Simon Morley + Michael Tuffery

**Sun 21 April**  
**Cellar Bar**

Martin Wood's music is steeped in traditional blues. A great storyteller and musician, Martin wows audiences with his guitar playing. Simon is a Hampshire-based award-nominated singer-songwriter, encompassing many genres including rock, folk-pop, indie and acoustic. As well as being a great solo performer in his own right, Bracknell's very own Michael Tuffery is also a member of folk bands RyeWolf and WolfNote.

*I could see how much thought and hard work had been put into every element – a very powerful piece of theatre. Exceptional performances*

FRANKENSTEIN  
AUDIENCE MEMBER

*An excellent ensemble piece that kept me captivated throughout*

FRANKENSTEIN  
AUDIENCE MEMBER

*Fantastic stagecraft and storytelling*

MOJO AUDIENCE  
MEMBER



**Wed 6 – Sat 9 March**

**7.30pm**

**Studio Theatre**

Recommended age 12yrs+

Running time approx 130 mins  
including interval

£15 **C**

Good and best friends £13

By **Beth Flintoff**

Director **Jenny Brown**

Movement Director **Auriole Wells**

Original Music **Charlie Lester**

Lighting Design **Rachel Christie**

Producer **David Stacey**

A **STUDIO THEATRE** PRODUCTION

## **The Ballad of Maria Marten**

***It's been a year since I died, and  
still nobody has found me***

Summer 1827. In a barn in Suffolk, Maria Marten awaits her lover. A year later, hidden under the floor of the barn, Maria's body is found. The Red Barn Murder had all the hallmarks of a classic crime drama: a missing body, a disreputable squire and a village stuck in its ways.

But whilst sending shockwaves through the country, Maria's own story was lost. This play rediscovers her story; a story that is strikingly relevant to us today. It's a play not about a gruesome murder, but about a woman: vital, layered, empowered.

We finish our current Studio Theatre season showcasing local female talent in this moving and joyous production.

A community production



Wed 17 Jan 8pm

Cellar Bar

£14, good and best friends £12



MUSIC

GRAHAM STEEL MUSIC COMPANY

### The Gary Moore Blues Experience

The Gary Moore Blues Experience is a group of advanced and experienced players dedicated to the works of the great Gary Moore. The group covers his famous ballads *Parisienne Walkways*, *Still Got the Blues*, *Story of the Blues*, *Still in Love with You*, as well as his rockier side from his time with Thin Lizzy, including *Don't Believe a Word*. If you like your blues hard and rocky, interspersed with the lyrical and melodic, this is the authentic Gary Moore sound.

Fri 26 – Sat 27 Jan 7.45pm, Sat mat 2pm

Wilde Theatre

£22.50, good and best friends £17.50

C S G F



DANCE

CREATIVE ACADEMY

### Tarzan

The Creative Academy proudly presents *Tarzan*, a dance and aerial spectacular. A fun, family-friendly production based on the music of Phil Collins and other popular artists.

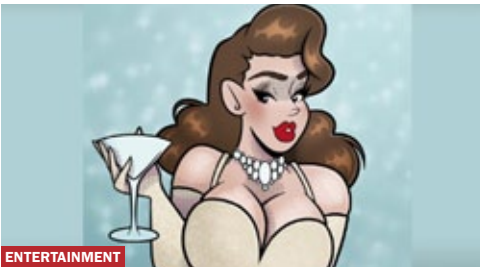
A man raised by orangutans must decide where he really belongs when he discovers he is Lord Greystoke.

A community production

Sat 27 Jan 7.30pm

Studio Theatre

£16.50



ENTERTAINMENT

HONEY DIAMOND

### A Night of Burlesque – Student Showcase

Step into a world of allure and artistry.

Join us for a mesmerizing evening of burlesque at our student showcase. Witness the grace, glamour and sheer talent of our budding performers as they take the stage.

From sultry moves to captivating costumes, this show promises an unforgettable experience.

Ages 18yrs+ contains nudity

Sun 28 Jan 3.45 & 7.45pm

Wilde Theatre

£25



COMEDY

BOUND AND GAGGED COMEDY

### Chris McCausland: Yonks!

A brand-new show for 2024. Chris McCausland is hitting the road again with a masterclass in stand-up comedy that has literally been yonks in the making.

You might have seen him on *Scared of the Dark*, *Would I Lie to You*, *Have I Got News for You*, *The Royal Variety*, *QI*, *Blankety Blank*, *The Last Leg*, and tons more.

He's been called an 'overnight success', even though he's been doing this for bloody yonks.

Ages 16yrs+

**Tue 30 Jan – Sat 3 Feb 7.30pm**

**Studio Theatre**

**£15.50, good and best friends £12.50**

**C**



**DRAMA**

THREE DOT THEATRE

## in & out

**Written by Keir Buist, directed by Tom Chapple**

'I bet you checked under your bed for monsters. That's me. Us. The boys in here. We're that monster you're hiding from...'

When Nick starts to struggle in prison he is assigned a support worker, Molly. They spend day after day learning to accept things out of their control.

An emotional and heartfelt story exploring the justice system, friendship and accepting help. Ages 12yrs+

**Thu 1 – Fri 2 Feb 7.45pm, Sat 3 Feb 2 & 6.30pm**

**Wilde Theatre**

**£21.50**

**C**



**MUSICAL**

RARE PRODUCTIONS

## We Will Rock You Young@Part

Featuring chart-topping Queen songs including *Another One Bites the Dust*, *Bohemian Rhapsody*, *Killer Queen*, *We Will Rock You*, *Somebody to Love*, *We Are the Champions*, and many more. This mind-blowing adaptation of the West End show follows two young rebels as they try to save rock 'n' roll in a corporate, post-apocalyptic future. *We Will Rock You Young@Part* is a musical for our time: a fist-pumping, foot-stomping anthem to individuality.

A community youth production

**Sun 4 Feb 4.30pm**

**Recital Room**

**£11.50**



**MUSIC**

WEST FOREST SINFONIA

## West Forest Sinfonia Chamber Concert

Chamber music performed by members of West Forest Sinfonia, who have played concerts in Berkshire and the surrounding area since 1987, under the baton of Philip Ellis.

This concert will be given by the Elmfield Trio (Clare Thompson – violin, Josh Salter – cello, and Sarah Down – piano) and the programme will include: Bloch – 3 *Nocturnes*; Beethoven – *Trio 5 op 70 nr 1 'Ghost Trio'*; Rachmaninov – *Trio Élégiaque in G minor* (1892); Martinů – *Bergerettes*.

**Wed 7 Feb 8pm**

**Cellar Bar**

**£14, good and best friends £12**



**MUSIC**

GRAHAM STEEL MUSIC COMPANY

## Prog Night – Café Chaos + Alpha Line

A fabulous evening featuring two emerging bands on the prog rock scene. Café Chaos's style draws on a variety of influences ranging from Pink Floyd, Rush, early Genesis, Gary Moore, Focus, Colosseum and Camel, all brought into the twenty-first century. Alpha Line is a four-piece band from Berkshire and Surrey with a sound drawing on trip hop, jazz, funk, ambient electronica and alternative psychedelic rock.

Wed 7 – Sat 10 Feb 7.45pm

Wilde Theatre

£18, good and best friends £15

C



DRAMA

LB PRODUCTIONS

**And Then There Were None**

Agatha Christie's best-selling crime story.

Ten strangers are cut off from the mainland on the isolated Soldier Island, their hosts mysteriously missing. One night, a voice is heard, accusing them each of a terrible crime. The first of the group suddenly drops dead. The strangers soon realise there is a murderer, ready to kill each of them, one by one.

Ages 12yrs+

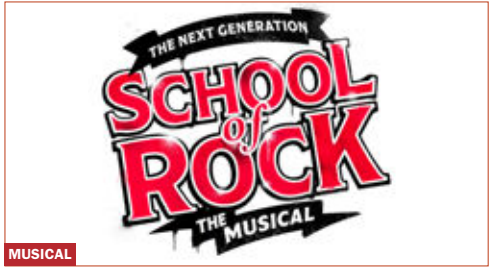
All proceeds in support of South Hill Park's fundraising campaign  
A community production

Thu 15 – Sat 17 Feb 2 &amp; 7pm

Wilde Theatre

£24

C



MUSICAL

BARTA

**School of Rock**

Rock got no reason, rock got no rhyme...

An electrifying two-hour sensation based on the hit movie. Join Dewey, the wannabe rock star turned substitute teacher, as he transforms straight-A students into a mind-blowing rock band.

Featuring 14 new songs by Andrew Lloyd Webber and the original movie tracks, it's a rock 'n' roll journey you won't want to miss. Ages 5yrs+

A community youth production

Sun 18 Feb 7.45pm

Wilde Theatre

£20



COMEDY

MOORE ENTERPRISING LTD

**Alfie Moore: A Face for Radio**

Thirty years of shift-work, and being punched in the face, had left 'Fair Cop' Alfie Moore with a 'face for radio'. A face not so much 'lived in' as inhabited by squatters with little regard to property maintenance. A surprising career shift turned middle-aged Alfie from street cop to BBC radio star. But when TV fame beckoned could he grasp it or was it past it?

Ages 14yrs+

**...offbeat, revealing and very funny** THE DAILY MAIL

Sat 24 Feb 3, 5.30 &amp; 7.30pm, Sun 25 Feb 11am

Wilde Theatre

£20, good and best friends £16

C



MUSICAL

ARTEMIS STUDIOS

**Annie Jr.**

Performed by the wonderful and ambitious young performers, aged 4-18yrs, from Bracknell's Artemis Studios Performing Arts Schools, with Junior Theatre Company, Little Actors and members of Medusa.

*Annie Jr.* features everyone's favourite little redhead. With equal measures of pluck and positivity, little orphan Annie charms everyone's hearts despite a next-to-nothing start in 1930s New York City.

Performed on licence from MTI Europe. Artemis Studios and College is a charity for the performing arts community, based at South Hill Park

## January

					page
Fri	5	7.30pm 9pm	Recital Room Mansion spaces	<b>Bracknell Jazz: Geoff Mason and the Jazz Lions</b> <b>Spirit Chasers Paranormal UK</b>	14 <i>see website</i>
Sun	14	12noon–3pm	Mansion spaces	<b>Wedding Fair 2024</b>	5
Wed	17	8pm	Cellar Bar	<b>The Gary Moore Blues Experience</b>	17
Sun	21	2pm	McAllister's	<b>Wilde Sundays: Lee Switzer Wolf + Andy Lavery + Bryony Heart</b>	15
Fri	26	7.30pm 7.45pm	Recital Room Wilde Theatre	<b>Conservatoire: Hugh Mackay and Junyan Chen</b> <b>Tarzan</b>	13 17
Sat	27	2 & 7.45pm 7.30pm	Wilde Theatre Studio Theatre	<b>Tarzan</b> <b>A Night of Burlesque – Student Showcase</b>	17 17
Sun	28	3.45 & 7.45pm	Wilde Theatre	<b>Chris McCausland: Yonks!</b>	17
Tue	30	7.30pm	Studio Theatre	<b>in &amp; out</b>	18
Wed	31	7.30pm	Studio Theatre	<b>in &amp; out</b>	18

## February

Thu	1	7.30pm 7.45pm	Studio Theatre Wilde Theatre	<b>in &amp; out</b> <b>We Will Rock You Young@Part</b>	18 18
Fri	2	7.30pm 7.30pm 7.45pm	Studio Theatre Recital Room Wilde Theatre	<b>in &amp; out</b> <b>Bracknell Jazz: Steve Waterman</b> <b>We Will Rock You Young@Part</b>	18 14 18
Sat	3	2 & 6.30pm 7.30pm	Wilde Theatre Studio Theatre	<b>We Will Rock You Young@Part</b> <b>in &amp; out</b>	18 18
Sun	4	4.30pm	Recital Room	<b>West Forest Sinfonia Chamber Concert</b>	18
Wed	7	7.45pm 8pm	Wilde Theatre Cellar Bar	<b>And Then There Were None</b> <b>Prog Night – Café Chaos + Alpha Line</b>	19 18
Thu	8	7.45pm	Wilde Theatre	<b>And Then There Were None</b>	19
Fri	9	7.45pm	Wilde Theatre	<b>And Then There Were None</b>	19
Sat	10	7.45pm	Wilde Theatre	<b>And Then There Were None</b>	19
Sun	11	2pm	McAllister's	<b>Wilde Sundays: The Gillies + Phil Cooper + Marc Woosnam</b>	15
Thu	15	2 & 7pm	Wilde Theatre	<b>School of Rock</b>	19
Fri	16	2 & 7pm	Wilde Theatre	<b>School of Rock</b>	19
Sat	17	2 & 7pm	Wilde Theatre	<b>School of Rock</b>	19
Sun	18	7.45pm	Wilde Theatre	<b>Alfie Moore: A Face for Radio</b>	19
Fri	23	7.30pm	Recital Room	<b>Conservatoire: Giulia Semerano and Filippo di Bari</b>	13
Sat	24	3, 5.30 & 7.30pm 7.30pm	Wilde Theatre Cellar Bar	<b>Annie Jr.</b> <b>The Gill Love Band</b>	19 22
Sun	25	11am	Wilde Theatre	<b>Annie Jr.</b>	19
Tue	27	7.45pm	Wilde Theatre	<b>Josh Pugh: Existin' La Vida Loca</b>	22
Wed	28	7.45pm	Wilde Theatre	<b>The Greatest Magician: An Evening of Wonders</b>	22
Thu	29	7.45pm	Wilde Theatre	<b>The Jersey Beats: Oh What a Nite!</b>	22

## March

Fri	1	7.30pm 7.30pm	Studio Theatre Recital Room	<b>What's Wrong with Benny Hill?</b> <b>Bracknell Jazz: Lucky Teeth – Geoff Simkins &amp; Liam Noble</b>	23 14
Sat	2	7pm 8pm	Wilde Theatre Cellar Bar	<b>Lift Off: Muscial Theatre Gala</b> <b>Mississippi MacDonald</b>	6 23
Tue	5	7.45pm	Wilde Theatre	<b>Ghost the Musical</b>	23
Wed	6	7.30pm 7.45pm	Studio Theatre Wilde Theatre	<b>The Ballad of Maria Marten</b> <b>Ghost the Musical</b>	16 23
Thu	7	7.30pm 7.45pm	Studio Theatre Wilde Theatre	<b>The Ballad of Maria Marten</b> <b>Ghost the Musical</b>	16 23



Fri	8	7.30pm 7.45pm	Studio Theatre Wilde Theatre	<b>The Ballad of Maria Marten</b> <b>Ghost the Musical</b>	16 23
Sat	9	2.30 & 7.45pm 7.30pm 7.30pm	Wilde Theatre Studio Theatre Recital Room	<b>Ghost the Musical</b> <b>The Ballad of Maria Marten</b> <b>Raymond Burley - Around the World in 80 Minutes</b>	23 16 23
Sun	10	2 & 4pm	Wilde Theatre	<b>Spot's Birthday Party</b>	24
Tue	12	7pm	Wilde Theatre	<b>Shakespeare Schools Festival</b>	24
Wed	13	7pm 8pm	Wilde Theatre Cellar Bar	<b>Shakespeare Schools Festival</b> <b>Ajay Srivastav + Support</b>	24 24
Thu	14	7.45pm	Wilde Theatre	<b>The Greatest Star - Barbra Streisand Tribute Show</b>	24
Sat	16	7pm	Wilde Theatre	<b>Lift Off: Youth and Community Gala</b>	6
Sun	17	7pm	Wilde Theatre	<b>Lift Off: Youth and Community Gala</b>	6
Tue	19	8pm	Wilde Theatre	<b>Simon Brodtkin: Screwed Up</b>	<i>see website</i>
Wed	20	7.45pm	Wilde Theatre	<b>The Glenn Miller and Big Band Spectacular</b>	25
Thu	21	7.45pm	Wilde Theatre	<b>Aled Jones – Full Circle</b>	25
Fri	22	7.30pm	Recital Room	<b>Conservatoire: Instrumental and chamber music by The Purcell School</b>	13
Sat	23	2.30pm	Wilde Theatre	<b>There Was an Old Lady Who Swallowed a Fly</b>	25
Sun	24	2pm	McAllister's	<b>Wilde Sundays: Mike Lemin + Becky Brown + Veronica Drozdowski</b>	15
Mon	25	7.45pm	Wilde Theatre	<b>Macbeth</b>	25
Tue	26	1 & 7.45pm	Wilde Theatre	<b>Macbeth</b>	25
Wed	27	7.45pm	Wilde Theatre	<b>The Hound Of The Baskervilles</b>	26
Thu	28	2 & 7.45pm	Wilde Theatre	<b>The Hound Of The Baskervilles</b>	26
Fri	29	7.30pm	Recital Room	<b>Bracknell Jazz: Nat Steele Quartet with Mike LeDonne</b>	14
<b>April</b>					
Tue	9	12noon & 4pm	Wilde Theatre	<b>Beauty and the Beast – The Broadway Musical</b>	8-9
Wed	10	12noon & 4pm	Wilde Theatre	<b>Beauty and the Beast – The Broadway Musical</b>	8-9
Thu	11	3 & 7pm	Wilde Theatre	<b>Beauty and the Beast – The Broadway Musical</b>	8-9
Fri	12	12noon & 4pm	Wilde Theatre	<b>Beauty and the Beast – The Broadway Musical</b>	8-9
Sat	13	12noon & 4pm	Wilde Theatre	<b>Beauty and the Beast – The Broadway Musical</b>	8-9
Sun	14	12noon & 4pm	Wilde Theatre	<b>Beauty and the Beast – The Broadway Musical</b>	8-9
Wed	17	7.45pm 8pm	Wilde Theatre Cellar Bar	<b>The Elvis Years</b> <b>Heartfakers</b>	26 26
Thu	18	7.45pm	Wilde Theatre	<b>The Carpenters Experience</b>	26
Sat	20	3pm 8pm	Wilde Theatre Cellar Bar	<b>Dancing Around The World</b> <b>Eat at Joe's - Steely Raitt</b>	27 27
Sun	21	2pm	McAllister's	<b>Wilde Sundays: Martin Wood + Simon Morley + Michael Tuffery</b>	15
		3pm	Wilde Theatre	<b>Dancing Around The World</b>	27
Tue	23	7.45pm	Wilde Theatre	<b>Tony Stockwell – Psychic Medium</b>	27
Wed	24	7.45pm	Wilde Theatre	<b>Austen's Women: Lady Susan</b>	27
Thu	25	7.45pm	Wilde Theatre	<b>Tom Houghton: It's Not Ideal</b>	28
Fri	26	7.45pm	Wilde Theatre	<b>The Opera Boys: A Night at the Musicals</b>	28
Sat	27	7.45pm	Wilde Theatre	<b>The Upbeat Beatles</b>	28
Tue	30	7.45pm	Wilde Theatre	<b>Susan of Narnia</b>	28

**Sat 24 Feb 7.30pm**

**Cellar Bar**  
**£10**



### **The Gill Love Band**

The versatile Gill Love Band will entertain you with a wide range of music from R&B, jazz, pop, blues and the odd instrumental.

The band met at South Hill Park almost ten years ago and love a packed audience when they are playing for the South Hill Park Trust charity.

Songs to get your feet tapping, including: *Don't Wait Too Long*, *I'll Play the Blues for You*, *Sweet Home Chicago*, *A Night Like This*, *Light My Fire* and *Hippology*.

**Wed 28 Feb 7.45pm**

**Wilde Theatre**  
**£24.50, good and best friends £22.50, meet and greet £36**



SHOWMAN LIVE LIMITED

### **The Greatest Magician: An Evening of Wonders**

A critically acclaimed, intimate glance at the world's most engaging art form. Presented by the magician most infamous for jamming the BBC switchboard – after he correctly predicted the lottery, this dazzling, five-star rated show promises to leave you aching with laughter and dizzy in disbelief.

Be transported to a jaw-dropping world of light-hearted hilarity, wonderment, and mystery – James Phelan is *The Greatest Magician*. Ages 12yrs+

**Tue 27 Feb 7.45pm**

**Wilde Theatre**  
**£20**



PHIL MCINTYRE LIVE LTD

### **Josh Pugh: Existin' La Vida Loca**

Brand new stand-up show from Edinburgh Award-nominated viral sensation Josh Pugh. Josh returns following a sell-out debut UK and Ireland Tour with a show about enjoying yourself and doing your best.

As seen on *Hypothetical* (Dave), *BBC New Comedy Awards*, *Head Judge* (BBC), *Mock the Week* (BBC) and *The Last Leg* (Channel 4).

Ages 14yrs+

**A clever and heart-warming show** THE GUARDIAN

**Thu 29 Feb 7.45pm**

**Wilde Theatre**  
**£25, good and best friends £23**



VIVA ENTERTAINMENTS LTD

### **The Jersey Beats: Oh What a Nite!**

A sensational show celebrating the wonderful music of Frankie Valli & The Four Seasons and a night out not to be missed – this is a different style of tribute show.

Matt Andrew leads our vocal quartet, performing alongside Johnny, Michael and Toby. There's also comedy host Leye D Johns and our Viva showgirls.

Stunning costumes, choreography and production all to take you back to the era when The Four Seasons were famous around the World.

Ages 16yrs+

Fri 1 March 7.30pm

Studio Theatre  
£16



GSP THEATRE PRODUCTIONS

## What's Wrong with Benny Hill?

Written by Mark Carey

A hilarious, brand-new comedy that explores the life and legacy of a very peculiar, private and brilliant comedian, Benny Hill. Telling the story of his life and showing why he was considered by many of his peers to be the best – an imperial clown.

Benny was Charlie Chaplin's favourite comedian. He has millions of avid fans, so why has he been airbrushed from British comedy history? Ages 16yrs+

Sat 2 March 8pm

Cellar Bar  
£15, good and best friends £12



THUNDER TOWN MUSIC

## Mississippi MacDonald

Join us for a very special evening of the blues with Mississippi MacDonald – an English soul-blues singer-songwriter and guitarist.

Mississippi is a six-times British Blues Awards nominee. The blues he plays is authentic, heartfelt and reflects a lifetime of learning from the greats. His first record, *Do Right, Say Right*, was named in the Top 10 Blues Albums of 2022 by Mojo Magazine and was album of the year on HRH Blues Radio.

Tue 5 – Sat 9 March 7.45pm, Sat mat 2.30pm

Wilde Theatre  
£23

C G



CROWTHORNE MUSICAL PLAYERS

## Ghost the Musical

Based on the hit 1990 romantic fantasy thriller of the same name, *Ghost the Musical* brings to life the iconic Patrick Swayze film with powerfully heart-wrenching songs, including *Unchained Melody*, as well as incredible special effects.

Lovers Sam and Molly are attacked as they return to their apartment. When Sam dies, he becomes caught between the real world and the next. Molly is in danger but can Sam warn her before it's too late?

Sat 9 March 7.30pm

Recital Room  
£13.50

C



RAYMOND BURLEY

## Raymond Burley – Around the World in 80 Minutes

Classical guitarist Raymond Burley is making a welcome return to South Hill Park with music from England, Spain, South America, Poland and Germany.

The programme will include Bach's monumental *Chaconne* from Partita BWV 1004.

**Sun 10 March 2 & 4pm**

**Wilde Theatre**

**£17.50**

**F**



**FAMILY**

SAM BRADSHAW PRODUCTIONS

## Spot's Birthday Party

**Words and songs by Guy Unsworth  
Based on the books by Eric Hill**

Spot is having a very special birthday party and you're invited. With party hats, songs, dancing and lots of interactive party games, this is going to be the best birthday party ever.

This brand-new interactive and accessible show brings Spot and his friends to life.

Ages 2yrs+

**Wed 13 March 8pm**

**Cellar Bar**

**£14, good and best friends £12**



**MUSIC**

GRAHAM STEEL MUSIC COMPANY

## Ajay Srivastav + Support

Ajay Srivastav is a London-based singer-songwriter who plays a genre-bending mix of Indian folk, blues and Americana with lyrics that explore issues of identity, loss and spirituality. In an age of cultural division and societal conflict, his performances have been described as passionate, healing and uplifting. His latest album *Powerless* reached number one in the Amazon Blues chart and received rave reviews.

**Tue 12 and Wed 13 March 7pm**

**Wilde Theatre**

**£12.50, good and best friends £11**

**C G**



**DRAMA**

CORAM SHAKESPEARE SCHOOLS FOUNDATION

## Shakespeare Schools Festival

Coram Shakespeare Schools Foundation is proud to present the world's largest youth drama festival at South Hill Park Arts Centre.

Join us to witness Shakespeare's timeless stories brought to life, as young people from your community take to the stage in a unifying evening of live theatre.

**Thu 14 March 7.45pm**

**Wilde Theatre**

**£24, good and best friends £22**

**C**



**MUSIC**

TOM MCLEOD

## The Greatest Star – Barbra Streisand Tribute Show

Starring Kearra Bethany, *The Greatest Star* takes you on a magical journey as you sit back, relax and enjoy the sounds of this wonderful production. Backed by a magnificent live band and joined by guest artists for iconic duets, it'll bring back all the Mem'ries.

This spectacular will have you singing, tapping and laughing. Celebrating songs such as *As If We Never Said Goodbye*, *No More Tears*, *Guilty*, *Don't Rain on My Parade*, *Memory*, plus many more.



Wed 20 March 7.45pm

Wilde Theatre  
£26



MUSIC

MSO PRODUCTIONS LTD

### The Glenn Miller and Big Band Spectacular

The music that filled the dancehalls during the Big Band era is brought to life again by The Moonlight Serenade Orchestra UK. The hardest swinging big band in the UK recreates the million sellers of the 40s and 50s.

*Moonlight Serenade*, *Little Brown Jug* and *String of Pearls* are a few of the numbers that shot band leader Glenn Miller to world stardom. Also featuring songs from Tommy Dorsey, Duke Ellington and Count Basie.

Thu 21 March 7.45pm

Wilde Theatre  
£32.50, VIP £52.50, meet and greet £72.50



ENTERTAINMENT

A WAY WITH MEDIA

### Aled Jones – Full Circle

Classical singer, musical star, television broadcaster, presenter – Aled is looking back on a remarkable career with a one-man show that will feature never-before-heard music, tales from the decades and his story told in his own words.

He was the boy treble who captivated the world with his angelic voice. Selling over seven million albums, Aled was the original classical crossover star.

It's time to come *Full Circle*.

Sat 23 March 2.30pm

Wilde Theatre  
£15.75

C



FAMILY

THE PEOPLE'S THEATRE COMPANY

### There Was an Old Lady Who Swallowed a Fly

Written by Steven Lee

The People's Theatre Company brings the world's best loved nursery rhyme to life, just in time to celebrate the 50th anniversary of Pam Adams' book.

A captivating combination of live action, animation and puppetry, this magical re-telling is sure to delight children and adults in equal measure.

Ages 3yrs+

Mon 25 – Tue 26 March 7.45pm, Tue mat 1pm

Wilde Theatre  
£24.50, good and best friends £21.50

C S



DRAMA

NATIONAL PRODUCTION COMPANY LIMITED

### Macbeth

A full-scale production set in the murky Dark Ages where love, politics and witchcraft collide.

A war-worn Macbeth is told by three sisters that he is fated to become King of Scotland, so beginning a series of events that lead to the destruction of Kings, friends and souls as he, and his Lady, try to cling to the tainted crown.

Enjoy this classic tale as portrayed by William Shakespeare with sorcery, ghostly apparitions and spectacular sword fights. Ages 11yrs+

Wed 27 – Thu 28 March 7.45pm, Thu mat 2pm

Wilde Theatre

£24.50, good and best friends £21.50

C



DRAMA

CRIME AND COMEDY THEATRE COMPANY

## The Hound of the Baskervilles

Live on stage, Colin Baker (*Doctor Who*) and Terry Molloy (*The Archers*) join forces to play Sherlock Holmes and Doctor Watson, in this tale of murder, mystery and horror that's surely the greatest detective story ever told.

The line between reality and the legend becomes blurred for the world's most famous detectives as death, doom and the supernatural surround them.

Ages 10yrs+

Wed 17 April 8pm

Cellar Bar

£14, good and best friends £12



MUSIC

GRAHAM STEEL MUSIC COMPANY

## Heartfakers

Performing the music of Tom Petty & the Heartbreakers. This excellent seven-piece band, including a Stevie Nicks, perform all the classic songs as well as more obscure tracks. Tom Petty and the Heartbreakers formed in 1976 and the band had a long string of hit singles including *Breakdown*, *American Girl*, *Refugee*, *The Waiting*, *Learning to Fly*, and *Mary Jane's Last Dance*, among many others, that stretched over several decades of work.

Wed 17 April 7.45pm

Wilde Theatre

£30.50, good and best friends £28.50

C



MUSIC

MARIO PRODUCTIONS LTD

## The Elvis Years

Now in its 20th year, *The Elvis Years*, led by original West End lead Mario Kombou, embarks on its biggest ever tour of the UK and beyond.

Undoubtedly the UK's premier Elvis theatre production, this stunning show takes the audience on a fantastic journey through all the years The King ruled the airwaves.

With a full cast of West End talent delivering hits such as *That's Alright Mama* and *Suspicious Minds*.

Thu 18 April 7.45pm

Wilde Theatre

£25.50, good and best friends £23.50



MUSIC

ORANGEBOX THEATRE GROUP LTD

## The Carpenters Experience

The UK's leading Carpenters show, featuring the amazing voice of Maggie Nestor and a band full of top-class musicians, captures the sights and sounds of the amazing talents of Richard and Karen Carpenter.

Featuring hit songs *Close To You*, *We've Only Just Begun*, *Top of the World*, *Rainy Days and Mondays*, *Solitaire*, *Goodbye to Love*, *Please Mr Postman*, *For All We Know* and *Only Yesterday*.

It's yesterday once more...

Sat 20 – Sun 21 April 3pm

Wilde Theatre  
£19.50



DANCE

1, 2 STEP DANCE ACADEMY

### Dancing Around the World

1, 2 Step Dance Academy presents their biennial showcase of dance, in an entertaining show suitable for all ages. *Dancing Around the World* will take you on a magical journey through the lands of Africa, along the skies of Norway and to the waters of New Zealand.

A production full of colour, rhythms and dance for all to enjoy. Who has their passport ready to join this adventure?

A community youth production

Sat 20 April 8pm

Cellar Bar  
£12



MUSIC

ZELLAH B

### Eat at Joe's - Steely Raitt

An evening of live music to celebrate some of the greatest songs by Bonnie Raitt and Steely Dan.

Join tasty, top-notch band Eat at Joe's as they bring their favourite covers to the table and serve up plenty of funky jazz-rock and blue-eyed soul.

Whether you love Bonnie Raitt or Steely Dan, Eat at Joe's invite you to join them down in the Cellar Bar where they will be serving up something very special.

Tue 23 April 7.45pm

Wilde Theatre  
£26.50



ENTERTAINMENT

BLONDE SHEEP EVENTS LTD

### Tony Stockwell – Psychic Medium

Remarkably compelling, amazingly detailed and always humorous. The popular TV star, Tony Stockwell, has a long-established credibility as one of the top intuitive mediums.

Demonstrating his belief that those who have passed can communicate with their loved ones, Tony shares detailed messages, frequently including names, dates and locations – delivered with sensitivity and empathy.

For entertainment purposes  
Children can attend at parents' discretion

Wed 24 April 7.45pm

Wilde Theatre  
£19, good and best friends £16



DRAMA

DYAD PRODUCTIONS

### Austen's Women: Lady Susan

Austen's Women return in this darkly comic tale of Regency society and five women trapped within it; at their vanguard, fortune-hunting widow, Lady Susan, who might just have met her match...

From award-winning Dyad Productions (*I, Elizabeth*, *A Room of One's Own*). Based on Jane Austen's first full-length work from 1794, the piece is performed by Rebecca Vaughan and directed by Andrew Margerison.

Ages 8yrs+

★★★★★ **A towering performance** THE SCOTSMAN

**Thu 25 April 7.45pm**

**Wilde Theatre**  
**£19**

**C**



PHIL MCINTYRE LIVE LTD

### **Tom Houghton: It's Not Ideal**

After an incredible break-out year, the multi-viral social media sensation, Tom Houghton, sets out on his biggest and most hilarious show yet.

The man who asked us 'Do you ski?' returns to the UK to ponder a new question. In an age where tradition and progress are wrestling against each other; what are the parts of ourselves that need shedding and what is worth holding on to?

Ages 14yrs+

**Sat 27 April 7.45pm**

**Wilde Theatre**  
**£25**



JOHN WILSON MUSIC PROMOTIONS

### **The Upbeat Beatles**

Paying homage to the greatest band in history, The Upbeat Beatles take you through the whole of the Beatles' career.

With authentic instruments, costume changes, multimedia, and featuring an ensemble cast of professional musicians with West End experience, this is a spectacular show not to be missed. For Beatles fans new and old, it will give you something to remember *Now and Then*.

**Fri 26 April 7.45pm**

**Wilde Theatre**  
**£25, good and best friends £24**

**C**



CONTEMPO PRODUCTIONS LTD

### **The Opera Boys: A Night at the Musicals**

Back with brand new musical medleys, stunning solo performances and a few surprises.

Whether you're a fan of modern day smash hit musicals, prefer the classics from Gershwin, or adore the definitive masterpieces like *Les Misérables*, this show has something for everyone.

With beautiful vocal arrangements, spectacular harmonies and great humour, The Opera Boys are perfect for musical theatre lovers both young and old.

**Tue 30 April 7.45pm**

**Wilde Theatre**  
**£19, good and best friends £16**

**C**



GAVIN ROBERTSON & KATHARINE MARY

### **Susan of Narnia**

**Written and directed by Gavin Robertson**

*The Last Battle* was the last of CS Lewis' *Chronicles of Narnia* in which Aslan creates the Real Narnia for the four children to live in eternal happiness.

Except they don't – because one of them, Susan Pevensie, isn't allowed. This is a story about what might have happened after Susan was left behind.

When she first went through the wardrobe, Susan was 12. Now it's 1967 and Susan is 39, just before Christmas... Ages 12yrs+



**Wed 1 May 7.45pm**

**Wilde Theatre**

**£22.50, good and best friends £17.50**

**C**



NEW OLD FRIENDS

**Houdini's Greatest Escape**

**Fri 3 May 7.45pm**

**Wilde Theatre**

**£22.50, good and best friends £18**



**MUSIC**

80S HiFi

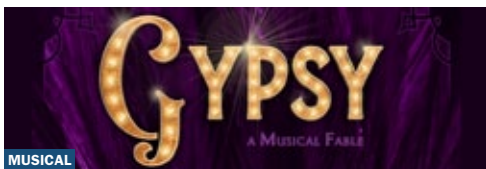
**80s HiFi**

**Tue 7 – Sat 11 May 7.45pm, Sat mat 2.30pm**

**Wilde Theatre**

**£23.50, Tue £21**

**C G**



**MUSICAL**

EAST BERKSHIRE OPERATIC SOCIETY

**Gypsy: A Musical Fable**

**Tue 21 May 1.30 & 4.30pm, Wed 22 May 10.30am & 4.30pm**

**Wilde Theatre**

**£16**

**S**



**FAMILY**

NICOLL ENTERTAINMENT

**The Tiger Who Came to Tea**

**Thu 2 May 7.45pm**

**Wilde Theatre**

**£26**



**MUSIC**

ONE NIGHT IN DUBLIN LTD

**One Night in Dublin**

**Sat 4 May 7.45pm**

**Wilde Theatre**

**£26**



**MUSIC**

SOUL STREET PRODUCTIONS LTD

**The Elton John Show**

**Thu 16 May 8pm**

**Wilde Theatre**

**£22.50**



**COMEDY**

IMPATIENT PRODUCTIONS

**Mark Watson**

**Sat 25 May 7pm**

**Wilde Theatre**

**£16.50**

**C F**



**MUSIC**

RED ENTERTAINMENT

**The Little Mix Show – Woman Like Me**

Term **Mon 8 Jan – Sun 24 March** Half-term **Mon 12 – Sun 18 Feb**

Materials lists available online

CHILDREN AND YOUNG PEOPLE

- Bilingua sing – French 0–5yrs
- Bilingua sing – Italian 0–5yrs
- Children’s beginners guitar
- Eleven seventeen 11–17yrs
- Eleven seventeen at the library 11–17yrs
- Junior piano 6–16yrs
- Make your mark 7–11yrs (five-week course)
- Muddy hands pottery 5–8yrs
- Muddy Hands pottery 9–12yrs
- Street dance energy juniors 8–16yrs

VISUAL ARTS

- Ceramics beginners and improvers
- Ceramics improvers and advanced
- Ceramics mixed ability
- Ceramics regulars
- Creative with clay
- Crochet for beginners
- Crochet for regulars
- Drawing and painting for beginners
- Drawing and painting for improvers
- Drop-stitch knitting group
- Embroidery
- Further fun with oils
- Get confident with oils
- Jewellery and silversmithing
- Jewellery and silversmithing for beginners
- Jewellery and silversmithing open access
- Learn watercolours
- Life drawing morning for beginners and intermediates
- Life drawing evening for beginners and intermediates
- Life drawing for intermediates and advanced
- Lino printing for beginners
- Make a quilt
- Portrait painting in oils
- Portrait drawing and oil painting for intermediates and advanced
- Printmaking for all levels
- Printmaking for beginners
- Printmaking for intermediates and advanced
- Printmaking open access
- Sculpting in clay
- Stained glass

PERFORMANCE ARTS

- Ballet for beginners
- Ballet for intermediates and advanced
- Classical and contemporary dance
- Contemporary dance for beginners
- Contemporary dance for improvers
- One-to-one piano
- One-to-one singing
- Over 50s strictly dance
- Park singers
- Piano mixed ability
- Pilates matwork for beginners
- Pilates matwork for improvers
- Silver swans
- Tai chi – Chen style
- Tap for beginners
- Tap for intermediates
- Tap for advanced
- Yoga

Try before you buy

Martial arts, Health and wellbeing, and Dance courses offer a ‘no obligation’ first session, which is free of charge if you don’t wish to continue the course. Subject to availability.



Take part: [facebook.com/groups/shptakepart](https://facebook.com/groups/shptakepart)

A community group where course students can post and share their work

For full information on all our courses and workshops, and to book a place, please visit [southhillpark.org.uk/take-part/courses](https://southhillpark.org.uk/take-part/courses)



South Hill Park offers over 60 courses and workshops, in both visual and performing arts, in each of our three terms throughout the year. Each one is run by an expert tutor and held in some of the most professionally-equipped specialist studios in the country. Our courses typically have ten weekly sessions, whereas workshops usually take place over a single day. There are classes to suit all abilities and some offer a free try-before-you-buy first session, including: Martial arts, Health and wellbeing, Drama, and Dance. Here's a taster of what's available. To view all courses and workshops, please visit [southhillpark.org.uk/take-part](https://southhillpark.org.uk/take-part)

## VISUAL ARTS

### Stained glass



Caroline Loveys

Thu 11 Jan – Thu 21 March  
10am–12.30pm

Tue, Wed & Fri classes also available  
£156 

Explore the exciting craft of stained glass, under expert tuition. You will learn the techniques required to create your own panels or three-dimensional pieces. No experience necessary.

### Portrait painting in oils



Mick McNicholas

Fri 12 Jan – Fri 22 March 1.30–4pm  
£158 

Working from professional portrait models, explore a variety of techniques to obtain a likeness whilst investigating colour and application of paint.

### Drawing and painting for beginners



Caroline Crawford

Thu 18 Jan – Thu 21 March  
6.45–9.15pm  
£158 

Inspiring sessions with expert tuition, aimed at beginners to the medium wanting to learn basic skills. Students will work on set projects covering a variety of subjects and materials.

- Suitable for beginners
- Suitable for intermediates
- Suitable for advanced
- ● ● Suitable for all

## PERFORMING ARTS

### Pilates matwork for beginners



Amanda Gibson

Tue 9 Jan – Tue 19 March  
11am–12noon  
£83.50 

Gentle, controlled movement patterns with breathing and core control. Increase your body's strength and flexibility, and relax your tight and over-worked muscles. Focus on building the foundations of Pilates practice.

### Tai chi – Chen style



Steve Large

Tue 9 Jan – Tue 19 March  
12.30–1.30pm  
Sat 13 Jan – Sat 23 March 9–11am  
£94.50 

A martial art designed to help improve your health and wellbeing through soft, flowing exercises and sequences of breathing, meditation and visualisation.

### NEW Tap for advanced



Zoe Pembroke & Francisco Madeira  
Wed 10 Jan – Wed 20 March 8–9pm  
£71.50 

Tap is the original jazz dance and anyone, at any age, can start tapping.

With live piano music, this class is for those with a good knowledge of tap. Fast-paced, high-intensity lessons exploring different time signatures, more complex rhythms and challenging sequences.



## Contemporary dance

### NOCTURN Dance

#### Beginners

Thu 11 Jan – Thu 21 March  
6–7.15pm

#### Improvers

Thu 11 Jan – Thu 21 March  
7.15–8.45pm  
£95

A great way to develop the core skills and styles of contemporary dance, including technique, travelling, exercise and routines.



### Online video courses to enjoy at home

Watch expert tutor videos and use materials from the kit we post to you.

Visit [southhillpark.org.uk/take-part/bridge](https://southhillpark.org.uk/take-part/bridge)

### Ceramics

Karen Marks  
£32

Three videos exploring basic pottery techniques. Use air-drying clay to create a unique, finished piece of work.

## Creative writing – bringing characters to life ● ● ●

**Lynn Hamilton**

**Sat 3 Feb 10am–2pm  
£28**

Infuse life and vibrancy into the main players in your stories. Delve into the art of painting characters with the richest palette of emotions. Add layers of complexity and authenticity to make your characterisers leap off the page. Please bring a notebook and pen.

## Blooms of winter – floristry experience ● ● ●

**Tenny Faniya**

**Sat 3 Feb 1–4pm  
£66**

A delightful introduction to the enchanting world of winter floristry. Learn the fundamentals of floral design, explore your creativity, and craft a beautiful winter arrangement to take home. All materials and tools provided.

## Two-week intensive throwing ● ● ●

**Kim Whelton**

**Sun 4 & 11 Feb 10am–3pm or  
Sun 17 & 24 March 10am–3pm  
£110**

Develop your throwing technique and fully understand the nuances of the process.

Throw, turn and apply surface decoration to your pieces. Fire and use transparent glaze.

All basic tools, clay and a selection of dipping glazes provided.



## Introduction to book binding ● ● ●

**Karen Marks**

**Sat 10 Feb 10am–2pm  
£44**

An introduction to the basic techniques of bookbinding, including how to check paper grain, the different components of a book and some basic stitches. Be guided through the stages to make a simple book using the techniques you have learned. Materials provide.

## Stained glass heart suncatchers ●

**Caroline Loveys**

**Sun 11 Feb 10.30am–4.30pm  
£80**

A perfect introduction to the art of stained glass. Learn how to cut glass and solder to make a beautiful heart suncatcher to take home. You don't need any prior knowledge as expert guidance and hands on support will be given throughout. All materials provided.

## Jewellery making – make a ring in a day ● ● ●

**Erica Sharp**

**Sat 24 Feb 10am–4pm  
£66**

Perfect for anyone who hasn't tried jewellery making before. Cover a range of techniques such as piercing, filing, annealing, soldering, shaping and polishing. Leave with a finished silver ring. All tools provided.

## Japanese calligraphy introduction ● ● ●

**Eiko Ishida**

**Sat 9 March 10.30am–1.30pm  
£33**

Learn the basics of Japanese calligraphy including: tools, brush hold and control, structure and meaning of Japanese characters. No calligraphy experience or Japanese language skills necessary. All supplies included.

## Georgia O'Keefe inspired flower in watercolour ●

**Caroline Crawford**

**Sat 23 March 10am–4pm  
£66**

Take inspiration from the stunning work of Georgia O'Keefe whilst learning skills in watercolour. Come away with a beautiful painting. With expert artist tuition to take you through the painting process step by step. All materials provided.



## EASTER FAMILY WORKSHOPS ● ● ●

**For under 5s with their responsible adult.  
All materials provided.  
Dress for mess.**

## Clay with natural resources 0–5yrs ●

**Joanna Allen-Dann**

**Wed 3 April 10–10.45am  
£3**

Be inspired by nature with a selection of natural items such as sticks, pinecones, shells and tools.

The magic is in the process so no thinking required – just enjoy and create.

## Natural inks 0–5yrs ●

**Joanna Allen-Dann**

**Wed 10 April 10–10.45am  
£3**

Find yourself immersed in the magic of nature, selecting plants, fruits and vegetables to create your own natural inks. Add a little science and watch colours transform in front of your eyes.





## MUSIC

## Junior piano 6–16yrs

Olivia Kennedy

Sat 6 Jan – Sat 16 March  
9am–12.30pmNo class Sat 11 Nov  
£90

Individual, fun and friendly 15-minute lessons covering exam work if required. Our young tutors bring their enthusiasm and energy for the piano and are mentored by our adult course tutors.

You are welcome to book multiple slots if you would like a longer lesson.

## NEW Children's beginners guitar 6–8yrs

Edward Jones

Wed 10 Jan – Wed 20 March  
6–6.45pm

£120

In this group class, children learn the fundamentals of music through playing simple, age appropriate melodies and a few chords on the guitar. A nylon string classical guitar will be required.

## ARTS &amp; CRAFTS

## NEW Muddy hands pottery

Kim Whelton

Five-week course

5–8yrs

Tue 9 Jan – Tue 6 Feb 3.45–4.45pm  
£60

9–12yrs

Tue 20 Feb – Tue 19 March  
3.45–5.15pm  
£75

Learn how to work with clay, through a mixture of demonstrations and practice, to produce a selection of pieces including a pen pot, name plaque and two-part secret box.

Use pinch, coil or slab methods. Apply coloured slip to decorate your pieces before they're fired with a transparent glaze. All materials provided.

## Make your mark 7–14yrs

Camila Aguais

Five-week course

Sat 13 & 27 Jan, 10 & 24 Feb,  
9 March 11am–2pm

£120

Grow your creativity. Join an inspiring professional artist to delve into classes packed full of different artistic techniques and skills. These engaging classes cover everything including: drawing, cartooning, acrylic painting, clay sculpture, design and printmaking.

## DANCE

## Street dance energy juniors 8–16yrs

Alan Cunningham

Tue 9 Jan – Tue 19 March 4–5.30pm

Two-week half term Tue 24 & 31 Oct  
£50.50

Locking, breaking, body-popping and some smooth footwork will be covered in this high-energy course.

## YOUTH GROUPS

## Eleven seventeen 11–17yrs

At South Hill Park (performing arts)

Jessica Balme

Fri 12 Jan – Fri 22 March 7–8.30pm

Free – no need to book in advance

At Bracknell Library (visual arts)

Areej Abdi

Sat 13 Jan – Sat 23 March  
11am–12.30pm

Free – book online only

A youth club for creative young people – with performing arts at South Hill Park and a second group running at Bracknell Library for crafts and visual arts.

With a different topic every week, enjoy a session of music, drama or dance at the arts centre, or mixed media, crafts and animation at the library. Past workshops included: musical theatre, sword fighting, spray painting, mask making, cake decoration and drumming. Learn a new skill, meet friends and have fun.



## EASTER PROJECT 2024



**Come and join us for a *Beauty and the Beast*-themed, action-packed week of musical theatre fun.**

Take centre stage and perform songs, dance routines and scenes inspired by *Beauty and The Beast*. Working with professional tutors, and performing in the Wilde Theatre alongside our very own 'Beauty' and 'Beast', you'll have an Easter holiday you'll never forget.

**Learn new skills, build confidence and form new friendships.**

**Mon 1 – Fri 5 April  
9am–5pm**

**Ages 6–16yrs**

**£190**

Easter Project 24 t-shirt included with every booking

**FREE showcase performance**

**Fri 5 April 5–5.30pm**

Only open to friends and family. Limited to six tickets per participant

**Until Mon 15 July 24**  
**Grand Staircase interactive wall**



## Look.Listen.Find

**Illustration by Darrell Kingsley**  
**Musical passages by James Armstrong**

Darrell Kingsley has created a series of drawings inspired by specific architectural elements and spaces inside and outside South Hill Park. Kingsley used these drawings to create the illustration for the interactive wall.

Darrell Kingsley is an artist with long experience in design, currently a technician and an MA student in the Fine Art department.

James Armstrong gathered impulse responses (IRs) around locations in South Hill Park, the acoustic equivalent of taking a photograph. Using the captured IRs, Armstrong wrote 12 short musical passages. Visitors to the installation can trigger these passages on the interactive wall at random to create their own, momentary composition that will be complimentary of the acoustics in the space.

James Armstrong is a mastering engineer, multi-instrumentalist and academic living and working in the Southeast of England.

[dkingsleyfish.com](http://dkingsleyfish.com)

[jamesedwardarmstrong.com](http://jamesedwardarmstrong.com)

**Mon 15 Jan – Sun 3 March**  
**Mansion galleries**



## Interwoven

**By Craft Continuum**

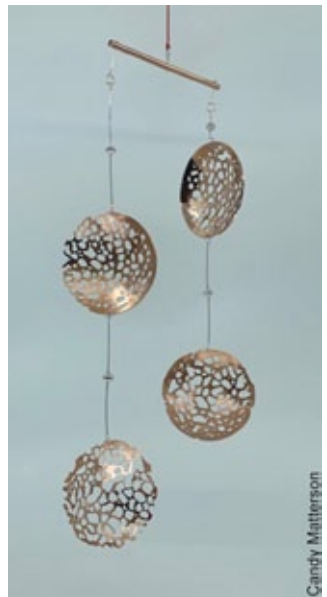
### Meet the artists

Sat 3 Feb 11am–1pm  
 Tall Hall

*Interwoven* is a response to South Hill Park and the stories that are woven into the fabric of the building and its history. Each artist has used materials that relate to their own way of working to create a collection of very personal reflections that not only tell stories but also illustrate the diverse nature of the group.

The exhibition forms part of the celebrations for the 50th anniversary of South Hill Park.

Craft Continuum is a unique collaboration of MA and PhD alumni artist-makers from the UCA network in Farnham. Whilst developing their own practice through innovative craftsmanship and expertise, many continue to explore the boundary between the crafts and the arts.



### Continuing exhibitions

Visit [southhillpark.org.uk/exhibitions](http://southhillpark.org.uk/exhibitions)

**Until Sun 7 Jan 2024**

*Eclectic Energetic Forms*

By Heather Upton

*Fishnets & Feathers*

By Joel Bondoux

**Wed 6 – Wed 20 March**  
**Mirror Gallery**



## **The Tell-Tale Rooms** By Andrew and Eden Kötting

**In conversation**  
Sat 9 March 2pm  
Cinema  
with Iain Sinclair

12-minute VR experience and exhibition.

An exhilarating father-daughter artwork collaboration. Blending immersive animation, archive footage and live-action to celebrate Eden's rare neurological syndrome by opening up the fusty doors of perception into a world of VR – and an old farmhouse deep in the French Pyrenees.

The 'real' house has been home to Eden and Andrew Kötting on-and-off for over 30 years. In these rooms you walk amongst the artworks, memories and dreams of Eden, a visually impaired, neuro-divergent artist.

**Wed 27 March – Sun 5 May**  
**Mansion galleries**



## **Planet Earth – Our Fragile Home** By Print at the Park

**Preview**  
Sat 6 April 11am–1pm  
Tall Hall


An exhibition dedicated to our fragile Earth.


We live on a planet which has immense and diverse beauty. All life forms in the natural world are interdependent and display a symbiotic relationship for their survival. The artists of Print at the Park have explored the theme of Planet Earth and our impact upon it, using printmaking techniques for 2D and 3D work on a variety of media.

Local schools have also explored the theme and have contributed to the exhibition in their own way.

Print at the Park exhibits in several venues and galleries in the South East.

[printattheparkgroup.co.uk](http://printattheparkgroup.co.uk)

 [printatthepark](https://www.instagram.com/printatthepark)

 [printatthepark](https://www.facebook.com/printatthepark)

**PRINT**  
the Park



# Atrium Bar and Restaurant



*We had a lovely bite to eat in the Atrium Restaurant –  
great food, first-class service* CUSTOMER FEEDBACK ON FACEBOOK

## Atrium Bar and Restaurant opening hours

For Jan – Feb opening hours, please see our website

Mon – Tue 9.30am–9pm

Wed – Thu 9.30am–10pm

Fri – Sat 9.30am–11pm

Sun 9.30am–8pm

Times subject to change

## Kitchen opening hours

Mon – Sat 12noon–8pm

Sun 12noon–6pm

## Would you like to book a table?

We recommend you book a table before visiting the restaurant as it can get very busy, especially during peak times. To reserve a table:

- call the catering office on 01344 416 233
- send a text stating your requirements to 07774 311 910
- email [catering@southhillpark.org.uk](mailto:catering@southhillpark.org.uk)
- message us at [facebook.com/AtriumBarSHP](https://www.facebook.com/AtriumBarSHP)

## Our menu

Visit [southhillpark.org.uk/eat-drink](http://southhillpark.org.uk/eat-drink) to look through all our menus.

## New breakfast menu

Served Mon – Sun 9.30–11am

Includes: toasted teacakes, bacon baps, sausage baps and vegetarian baps.

A selection of pastries are also available.

## Pre-show dining

Arrive early and enjoy a delicious meal in our popular Atrium Restaurant before taking your seat for a performance.

Table reservations can be made when booking tickets for performances.

## The Coach House

The Coach House is open for wedding and function bookings. With a variety of seating options, this exclusive, contemporary space features its own private bar and is perfect for larger events of up to 150 people.



## Interval drinks

Don't forget to order your interval drinks at the bar, before the show.

## Theatre meal deals

Available on all Mon – Thu evening shows and films.

Enjoy a two-course set menu meal in our Atrium Restaurant for £18 per person. Served from two hours before the start of the show.

Book your meal deal through our website. Email [hospitality@southhillpark.org.uk](mailto:hospitality@southhillpark.org.uk) to reserve your table.

## Sunday roast

Booking recommended to avoid disappointment. Due to the high level of demand, bookings for Sunday roast close at 8pm the evening before.

Sun 10 & Sun 31 March – book early on Mother's Day and Easter Sunday to avoid disappointment.

## Special events

To keep up to date with the latest Atrium news, please visit our Facebook page at [facebook.com/AtriumBarSHP](https://www.facebook.com/AtriumBarSHP)

## Private functions

South Hill Park is the perfect choice for your private function. We can accommodate a range of events including: birthday celebrations, christenings, Christmas parties and summer balls.

From formal sit-down dinners to afternoon teas, premium buffets and barbecues, we offer a wide variety of catering options. Good food, professional service and fine refreshments come as standard.

To check availability, and to discuss menu options and prices, please email [hospitality@southhillpark.org.uk](mailto:hospitality@southhillpark.org.uk) or call 01344 416233.

For more details, please visit [southhillpark.org.uk/hire-us/private-functions](http://southhillpark.org.uk/hire-us/private-functions)



### Mansion opening times

Mon–Sat 9am–11pm

Sun & bank holidays 9am–10.30pm

### Box Office opening times

For in-person and telephone bookings or enquiries:

Mon–Sat 10am–5pm

Sun & evenings – open one hour prior to the first performance, for collection of tickets.

### Discounts for members

Only good and best friends are eligible for the discounted member price when booking tickets for shows, films and courses. All friends are entitled to priority booking.

### Best friends ticket offer **241**

2 4 1 – buy a full-price ticket for an event with this symbol and get another free. Available on selected performances only.

### Concessions **C**

Concessions are available to 16yrs and under, students (17yrs+ in full-time education), registered unemployed, 65yrs+ and groups.

**NB** Not all concession types are available where you see this symbol **C**. Please ask the Box Office or check online when booking.

Only one concession applies. You may need to show proof of status. South Hill Park reserves the right to withdraw concessions at any time.

### Schools **S**

Discount prices available for schools. Email [sales@southhillpark.org.uk](mailto:sales@southhillpark.org.uk) to book your school group.

### Groups **G**

Discount prices available for groups. See website for details.

### Family **F**

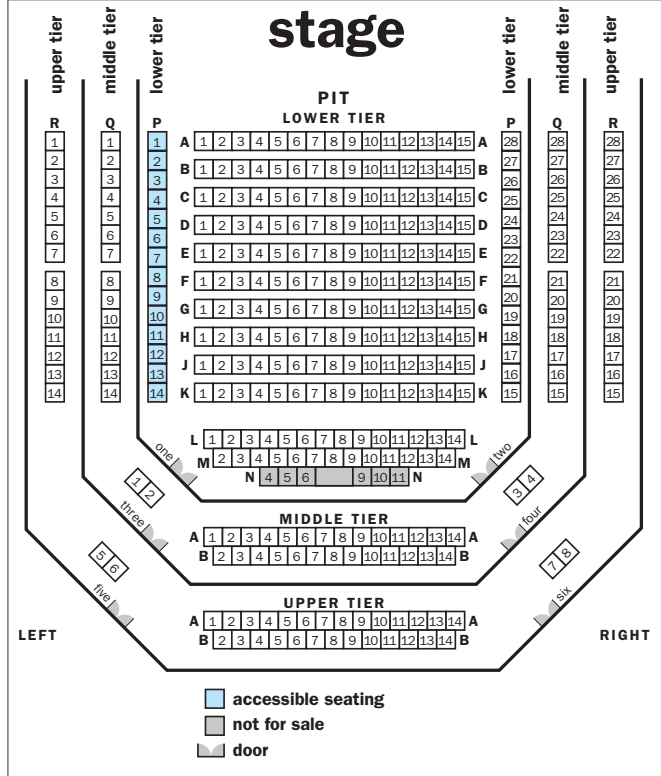
Discount prices available for families. See website for details.

### Venue hire

To discuss your party, wedding or function, email [hospitality@southhillpark.org.uk](mailto:hospitality@southhillpark.org.uk) or call 01344 413514.

Registered charity 265656  
Please support the future of the arts

## Wilde Theatre seating plan



We gratefully acknowledge the financial support from our funders



Supported using public funding by

ARTS COUNCIL ENGLAND



South Hill Park Trust would like to thank the many organisations, groups, parish councils and individuals who support the Arts Centre.



### Give your feedback

Scan the QR code to let us know about your visit – whether you have seen a show, viewed an exhibition, finished a course or hired a room.

## Clubs and societies

### SOTA Bracknell

For term dates and free sample sessions, please visit [sota.uk.com](http://sota.uk.com)

### Zumba Rhythms

With Suzanne and Sophie  
Tuesdays 7–8pm  
First session free, all levels welcome  
Call Suzanne on 07970 147648

## Associate companies

Artemis Studios and  
College of Performing Arts  
Blackeyed Theatre

## Creative Control Studio

Professional high-end recording studio combining the best of digital and analogue equipment, providing release quality results.

All genres of music catered for, from bands and acoustic artists to voiceover work etc. All projects welcome, from rough demos to fully produced singles, eps and albums.

We also specialise in mixing and mastering of pre-recorded material.

To discuss a project:  
[creativecontrol@live.co.uk](mailto:creativecontrol@live.co.uk) or  
01344 416202

## Contact us

### Online

[southhillpark.org.uk](http://southhillpark.org.uk)

### Email

[sales@southhillpark.org.uk](mailto:sales@southhillpark.org.uk)

### Box Office

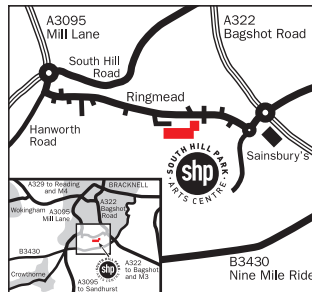
01344 484123

### Address

South Hill Park  
Ringmead, Bracknell  
Berkshire RG12 7PA

## How to find us

South Hill Park Arts Centre is about seven minutes' drive from Bracknell Town Centre in the Birch Hill area. Easily accessible from the M3 (Junction 3) and M4 (Junction 10). We are very well signposted – look for the brown road signs saying 'Arts Centre' or showing a comedy mask.



## By car

There is FREE but limited parking for 200 cars at South Hill Park Arts Centre. Please note the car park fills up quickly on busy days and you may need to seek alternative parking.

Please follow signs for overflow parking at the Leppington car park (behind Birch Hill shopping precinct) which is a five-minute walk across our rear grounds. Please leave plenty of time to park when attending South Hill Park.

The details in the brochure were correct at the time of going to press. South Hill Park reserves the right to make changes to the published programme in the event of unforeseen circumstances. We reserve the right to make discounted ticket offers to selected current or potential customers at any time.

## Public transport

South Hill Park Arts Centre is served well by local buses. From the Bus/Train Station to Birch Hill Shops take buses 4, 171 or 172. It's then a five-minute walk to the Arts Centre.

Bracknell is well served with train services from London Waterloo, Reading and other local towns. For further information contact National Rail Enquiries on 0345 7 48 49 50.

## South Hill Park grounds

The grounds of South Hill Park are managed by the Heritage Parks Team of Bracknell Forest Council in partnership with Bracknell Town Council.

The team works hard to maintain the grounds to the highest horticultural standards and have achieved the prestigious Green Flag Award and RHS Thames and Chilterns In Bloom Award (Gold Medal) over the past few years. If you have any queries about the grounds of South Hill Park please contact [heritage.parks@bracknell-forest.gov.uk](mailto:heritage.parks@bracknell-forest.gov.uk) and the team will be more than happy to help.



**South Hill Park gift vouchers**

Give a gift of the arts  
From £5, they're the perfect present for friends and family

Available from box office  
**01344 484123**  
or at  
**[southhillpark.org.uk/support-us/gift-vouchers](http://southhillpark.org.uk/support-us/gift-vouchers)**

## How to book

### Online

[southhillpark.org.uk](http://southhillpark.org.uk)

### Email

[sales@southhillpark.org.uk](mailto:sales@southhillpark.org.uk)

### Box Office

01344 484123

### In person

Call in to the Arts Centre and book in person at the Box Office.

## How to pay

You can pay using your credit or debit card, or with cash.

## Ticket prices and booking fees

No additional fees are applied to the advertised ticket prices. A booking fee and levy of up to £2.50 is included in the ticket price to go towards the running costs of the Arts Centre and Wilde Theatre. For *Beauty and the Beast* the fee and levy is £5.

## Exchanges and transfers

You may only exchange tickets for another performance of the same production up to 48 hours before the performance. An administration fee of £2 per ticket will be charged. Original tickets must be returned at time of exchange. South Hill Park Members will not be charged. Transfer of tickets from one production to another is not possible.

## Groups and school bookings

For group bookings of 20+, contact the Box Office via [sales@southhillpark.org.uk](mailto:sales@southhillpark.org.uk) or call 01344 484123.

For schools wishing to pay by invoice, a £2 per ticket deposit is required before reservations will be processed.

Full details of our group and school booking policies can be found on our website or from our Box Office team.

## Refunds and resales

Under the terms and conditions of sale, refunds of tickets are not permitted. However, if the show is sold out, we will try to resell it for you. In this case, we will charge a £2 administration fee per ticket. South Hill Park Members will not be charged for this service. Resale cannot be guaranteed.

## Data protection

Customers' data is handled according to the legislation established by the General Data Protection Regulation.

## Access

We try to accommodate all visitors to the Arts Centre and Theatre, there may however be restricted access to parts of the building due to its eighteenth-century listed status. Please let us know in advance if you have any particular access requirements.

Our facilities include:

- Disabled parking bays
- Ramped access to the premises including access to box office reception
- Lift access to the Wilde Theatre and to the first floor in the mansion
- Wilde Theatre accessible seating (Row P)
- Adapted toilets equipped with emergency alarms
- Infra-red hearing system installed in the Studio and Wilde Theatres. A £5 deposit will be required for headset hire.
- The cinema is fitted with an audio induction loop. Customers can use the T-setting on their hearing aids for clear film sound.
- Companions tickets available for people with registered disabilities who require extra support. Please advise the Box Office team of any special requirements you have when making your booking.



Mobility scooters are not permitted in performance spaces. However, we do have a wheelchair that our customers can use to transfer into their purchased seats. Please inform Box Office when booking so they can assign you the most suitable seats for your needs.

## Children

Children aged 12yrs or under must be accompanied by someone aged 18yrs+

South Hill Park is committed to safeguarding children and vulnerable adults.

### Booster seats

Available to hire in the Wilde Theatre only for £1 per seat, subject to availability. Please approach our front-of-house volunteers before the performance. Payment by cash only. Booster seats are not permitted on the middle and upper tier areas of the theatre.

## Leaving a legacy

As a registered charity we endeavour to make our Arts Centre and Theatre sustainable for future generations in Bracknell and beyond. The arts can transform lives and we hope you feel that way too.

Have you ever considered supporting South Hill Park by leaving a legacy in your will? Your generosity can help ensure future generations continue to enjoy South Hill Park Arts Centre just as you have done. For more information, email [development@southhillpark.org.uk](mailto:development@southhillpark.org.uk)

## Cinema

We show films throughout the week in our 60-seat cinema – from blockbusters and independents to the best foreign films, we cater for all tastes. Our screenings include dementia friendly, bringing in baby and hard of hearing performances.

Go online for film screening details.

## Bracknell Film Society

Bracknell Film Society welcomes everyone to its film screenings at South Hill Park cinema. For general and membership information see [bracknellfilmsoc.org](http://bracknellfilmsoc.org)

### Cinema hire (60 seats)

Available for private screenings and children's parties

From £60 per hour, minimum 3 hours

Additional catering and party packages available

Email [hospitality@southhillpark.org.uk](mailto:hospitality@southhillpark.org.uk) for more details

# South Hill Park Arts Centre Cinema

**Our beautiful 60-seat digital cinema specialises in acclaimed independent film, the latest Hollywood blockbusters and live-streamed theatre.**

***The perfect place to enjoy the best in film.***

## **We hold a variety of special screenings**

Family **F**

Bringing in baby **BIB**

Silver screen **SI**

Hard of hearing **HoH**

Dementia friendly **DF**

Live and recorded

## **Cinema hire (60 seats)**

Available for private screenings and children's parties

From £60 per hour, minimum 3 hours

Additional catering and party packages available

Email [hospitality@southhillpark.org.uk](mailto:hospitality@southhillpark.org.uk) for more details



Current screenings and more information  
**[southhillpark.org.uk/whats-on/cinema](https://southhillpark.org.uk/whats-on/cinema)**

**SOUTHILLPARK.ORG.UK** · BOX OFFICE **01344 484123**

 /SOUTHILLPARKARTSCENTRE  SOUTHILLPARK  /SHPARTSCENTRE

